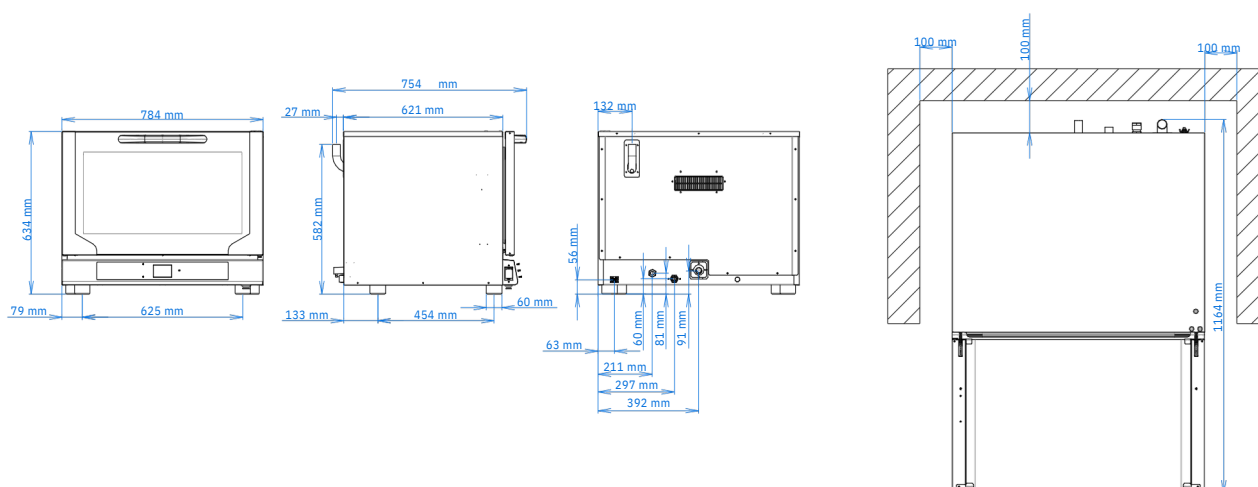


EKF 464 NT UD



ELECTRIC COMBI OVEN WITH TOUCH SCREEN AND DIRECT STEAM

Use: Pastry, Bakery



DIMENSIONAL FEATURES			
Oven dimensions (WxDxH mm)	784	754	634
Oven weight (kg)	58		
Distance between rack rails (mm)	83		

FUNCTIONAL FEATURES	
Power	Electricity
Capacity	N° 4 trays/grids 600 x 400 mm
Type of cooking	Ventilated
Steam	Direct steam controlled by touch screen and 10-step display [%]
Cooking chamber	AISI 304 Stainless steel
Temperature	30 - 260 °C
Temperature control	Digital probe thermometer
Control panel	Touch-Lower side
N° of programs	100
Programmable cooking steps	5
Pre-heating temperature	180 °C
Pre-heating function	Available
Programmable oven start	Available
Door	Tilt door Ventilated Inspectionable glass
Modularity	Available

ELECTRICAL FEATURES	
Power supply (kW)	6,4
Frequency (Hz)	50/60
Voltage (Volt)	AC 380/400 3N
N° of motors	2 Bidirectionals
B oiler	/
Protection against water	IPX4

EQUIPMENT			
Cardboard box dimensions (WxDxH mm)	805	830	800
Lateral supports	1 right + 1 left		
Cable	Single-phase [3G 1,5] - L=1600 mm		
Manual washing set up			
USB port			

PLUS	
Core probe setup (on request)	
Core probe (on request)	
Core probe support (on request)	
Wi-Fi module (on request)	



Servicing NSW and ACT

Ph: 02 4879 3808
www.briquip.com.au
admin@briquip.com.au